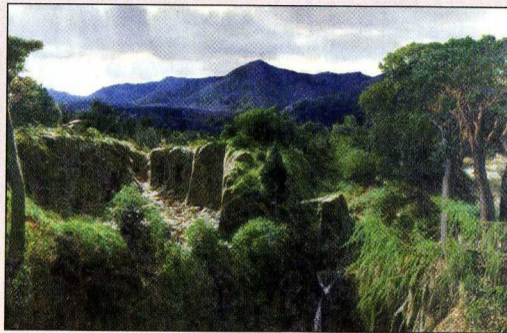


Where to buy... **Martin Greenland** at ArtSpace Gallery

Martin Greenland (b.1962) lives and works in the Lake District amongst some of England's grandest scenery, so it's not surprising that there's a grand, Wordsworthian feel about these apparently real but actually invented landscapes. They look at first like a cross between Romantic landscapes and the *plein-air* realism of the Barbizon School, recalling a variety of painters from Richard Wilson and Courbet (the rich, dark colours), Edward Lear, Ruskin, and Caspar David Friedrich to, in a different mood, Corot and Thomas Jones. For example, *Old Fashioned Light* is like one



Primitive Landscape, 2008 (91cm x 122cm, £8,500)

of Corot's Italian Campagna views – until you notice that the building so beautifully reflecting the warm, blond light is a modern factory. There are small, peaceful landscapes like *Fondly Remembered Evening*, but some works, on closer inspection, are more disturbing, revealing eerie, somehow anachronistic details – a minuscule street-light, for instance, lost in a primaeval forest. Prices range from £1,000 to £12,500.

84 St Peter's Street, London N1
(020-7359 7002). Until 10 October.